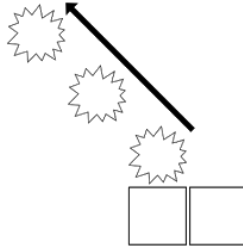


1 ■■■



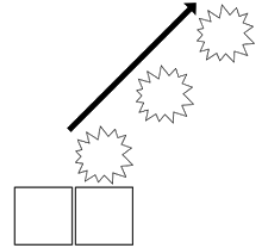
CHARGE

3 ■■■



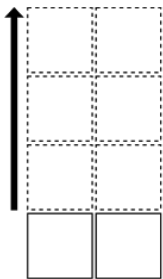
FIRE (L)

4 ■■■



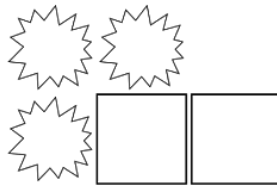
FIRE (R)

2 ■■■



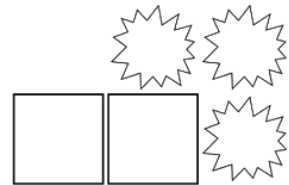
STOMP

5 ■■



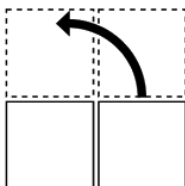
PUNCH (L)

6 ■■



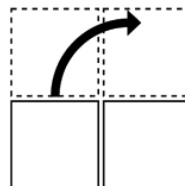
PUNCH (R)

7 ■■



TURN (L)

8 ■■



TURN (R)

9 ■■

MOVE:

- - STOMP
- - TURN
- - PUNCH
- - FIRE
- - CHARGE

DIRECTION:

- ■ ■ - LEFT
- ■ ■ - RIGHT

WILD